



TIMETABLE MANAGEMENT

Effective Network-wide Train Path Planning & Capacity Management

TPS.plan for train planning and capacity management enables railway infrastructure managers as well as train operating companies to significantly improve their operative and long-term timetable planning.

As a modular toolbox and high-performance software solution, TPS.plan combines infrastructure, timetable and train path management as well as all interaction. From strategic long-term planning to annual timetables to short-term planning: Benefit from our flexible solutions modules that can be adapted to a variety of needs.

TAILORED TO YOUR NEEDS

Highly flexible and configurable solutions for railway networks of any size. TPS.plan creates reliable timetables from strategic long-term planning to operational planning of daily schedules.

HIGH PERFORMANCE

Multi-user operation is a central element in the software architecture. As a result, trains can be processed by various planners from different organizations on different locations at the same time. Rights, roles, groups and users can be defined precisely.

FITS IN YOUR IT ENVIRONMENT

TPS provides several automated interfaces (e.g. web services) and thus optimally interacts with other systems. Customer-specific functions can be easily integrated. This way, TPS.plan perfectly adapts to existing IT infrastructures.

TPS.plan at a glance

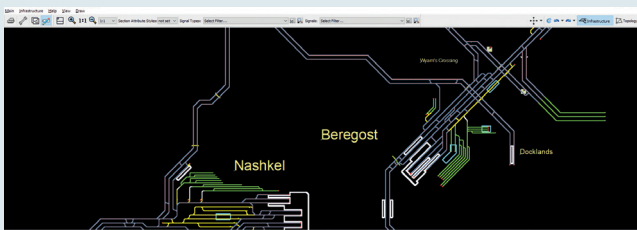


QUESTIONS?
info@hacon.de

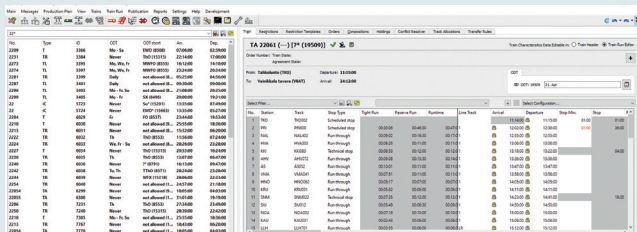
- Runtime calculation, exact to the second
- Seamless integration of closed tracks and speed limitations
- Automated search for conflict-free train paths and synchronization with the working timetable
- State-of-the-art graphical features: track infrastructure, graphical timetable, track occupation plan and various output options
- Easy data integration via various interfaces
- Static or dynamic access to occupation data
- Workflow-based bid-offer process for planning objects like train paths, construction sites, etc.
- Timetable and operational simulation functionality with integrated analysis
- Capacity analysis according to UIC 406
- European Communication Standard TAF TSI
- railML® certified



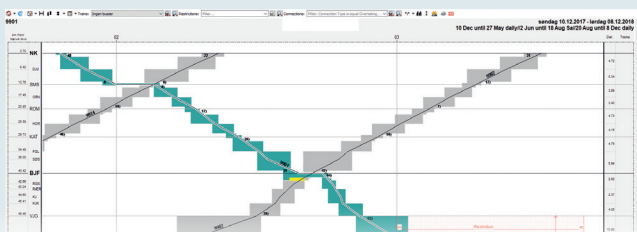
PLANNING WITH OVERVIEW: THE TPS WORKSPACE



The **GEOGRAPHY EDITOR** is a “digital copy” of the railway network and infrastructure. The microscopic modeling of the network allows high-precision timetable management. Line closures, construction sites etc. can be seen at a glance.



The **PLANNING EDITOR** allows to plan new train paths, maintain them and add construction activities and connections. Each path is listed with its respective calculation, validation and publication status.



The **DIAGRAMS EDITOR** offers various options for visualizing timetable data including possible train path conflicts. Planners can choose between a time/path view (Graphical Timetable), a track occupation plan and a calendar-based view.



We make mobility as easy as it gets: For passengers and for transport providers. Our software solutions ensure that passengers get from A to B comfortably and seamlessly – from trip planning, reservations, passenger communication and mobile ticketing to comprehensive MaaS solutions and On-Demand-Services. We support transport providers with fleet, disruption and data management, timetabling and live dispatching tools. We are: Siemens Mobility, Hacon, Sqills, eos.upgrade, Bytemark and Padam Mobility.